

Tarbat Discovery Centre

Summary of Relevant Projects *United Kingdom*



Right Steel and chrome gates flanking the Treasury Gallery

Above 'Detail of gates' central roundel

Below 'View of Main Display Area

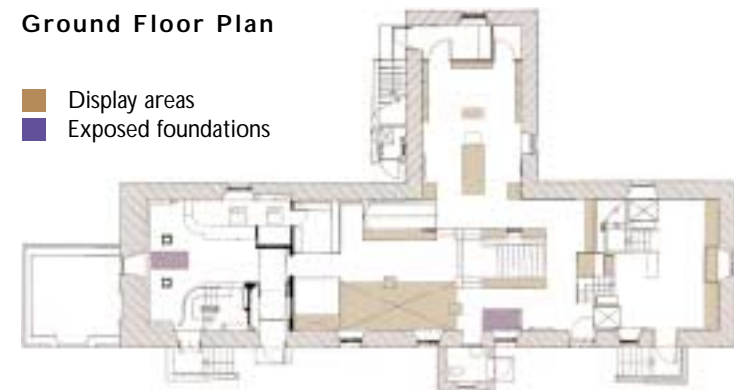


Tarbat Old Church, dating in parts from the 12th century, lies adjacent to the remains of a Pictish settlement that has recently yielded carvings and artefacts of international significance. Higgins Gardner & Partners were appointed in 1996 to convert the interior of the church as a display area for the finds and an interpretation centre where visitors can be introduced to the process of archaeology and explore the culture of the Picts.

The Tarbat Discovery Centre combines traditional craftsmanship with the latest developments in display techniques, materials and interactive audio-visual technology to provide a modern display interior that is sympathetic to the historic qualities of the grade I listed interior.

Ground Floor Plan

- Display areas
- Exposed foundations



The museum was opened by His Royal Highness the Prince of Wales in September 1999.