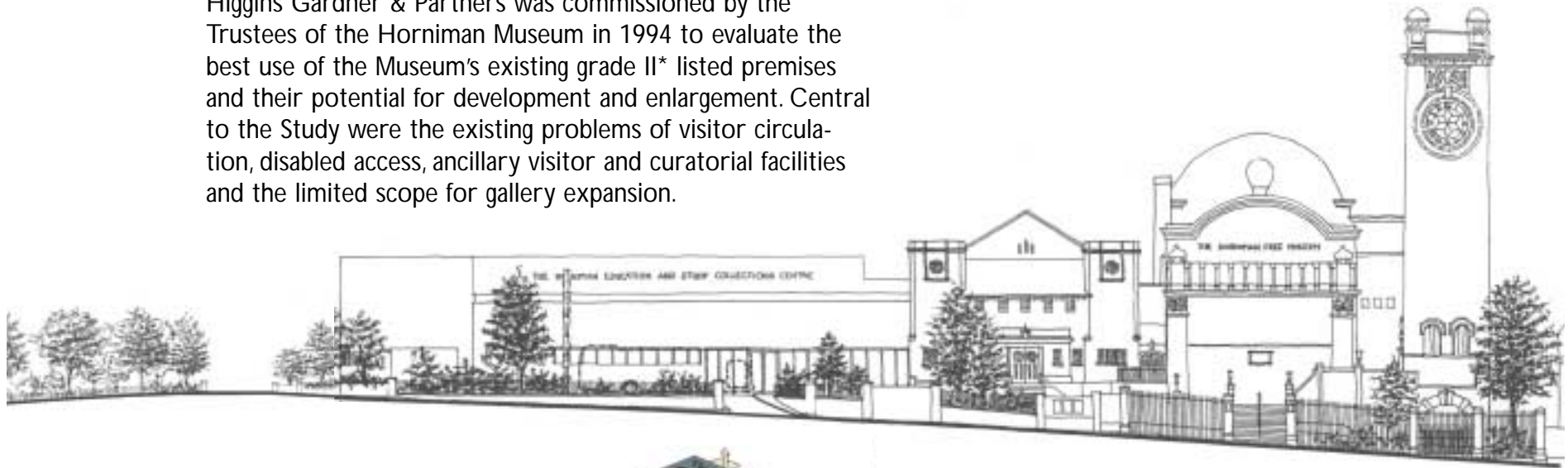


# Horniman Museum and Gardens

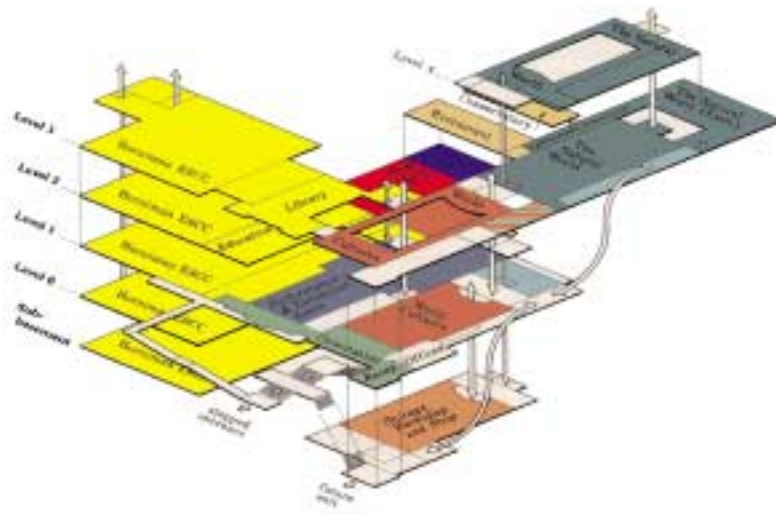
## Summary of Relevant Projects *United Kingdom*

Higgins Gardner & Partners was commissioned by the Trustees of the Horniman Museum in 1994 to evaluate the best use of the Museum's existing grade II\* listed premises and their potential for development and enlargement. Central to the Study were the existing problems of visitor circulation, disabled access, ancillary visitor and curatorial facilities and the limited scope for gallery expansion.



**Above**  
Front elevation of the Horniman Museum showing location of proposed Education and Study Collections Centre (ESCC)

**Right**  
Isometric diagram of completed Masterplan and new visitor circulation routes



The completed Evaluation Study proposed a number of detailed and general design options, focusing upon the contingent relationship between developments planned in the short to medium term and those anticipated within a longer timescale. These were arranged into 'serviceable clusters' that could be undertaken as an independent series of phased developments.

The selected proposals were presented as a strategic development plan to be implemented over a ten year period. The majority of the major developments proposed in the Evaluation Study have now been completed.